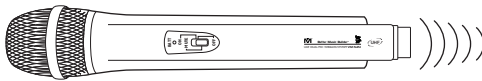
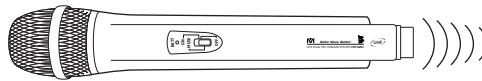


## HOW TO CONNECT RECEIVER

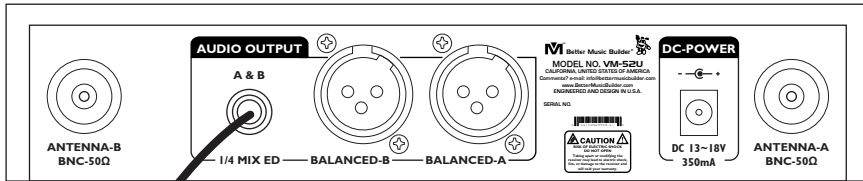


HANDHELD TRANSMITTER



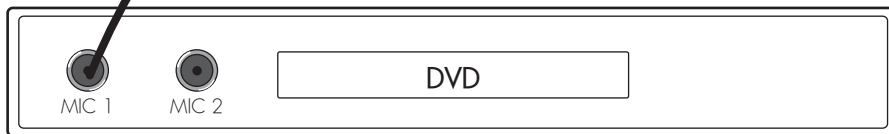
HANDHELD TRANSMITTER

### DIAGRAM 1



RECEIVER REAR VIEW

Unbalance Connection



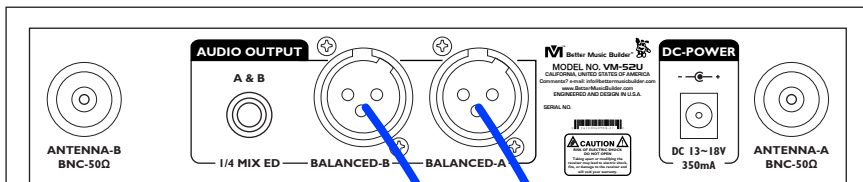
DVD KARAOKE PLAYER



Standard Connection: Unbalanced 1/4 connection

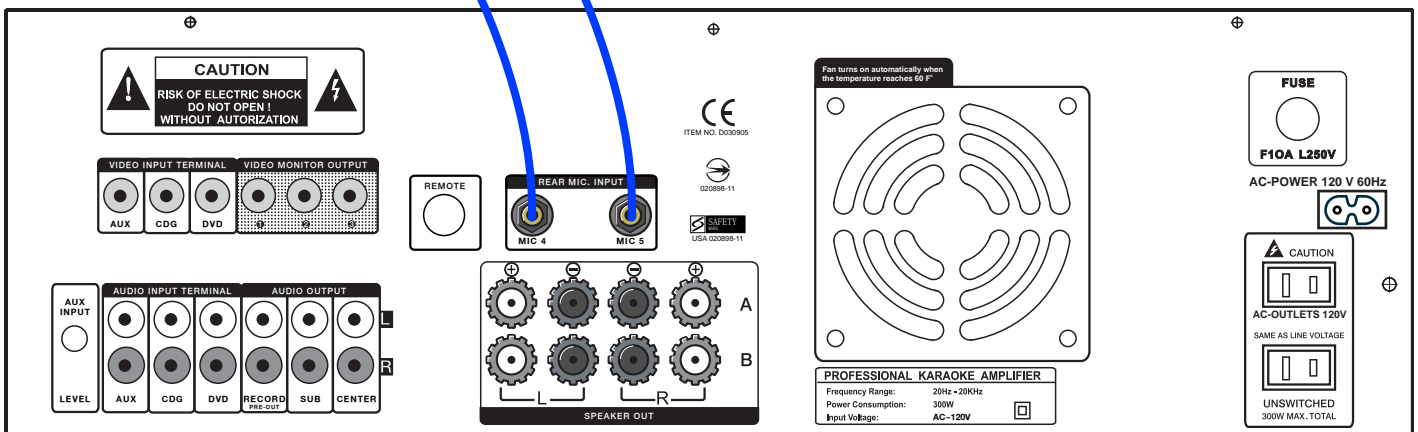
BMB (Better Music Builder) recommend you to use the best connection for your system.

### DIAGRAM 2



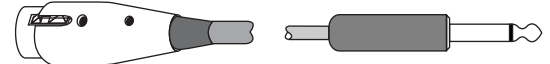
RECEIVER REAR VIEW

Balance Connection



AMPLIFIER

Optional: XLR balanced to 1/4 connection



Best Connection: Balanced 3-Pin XLR connection to prevent outside noise and upholds vocal clarity.