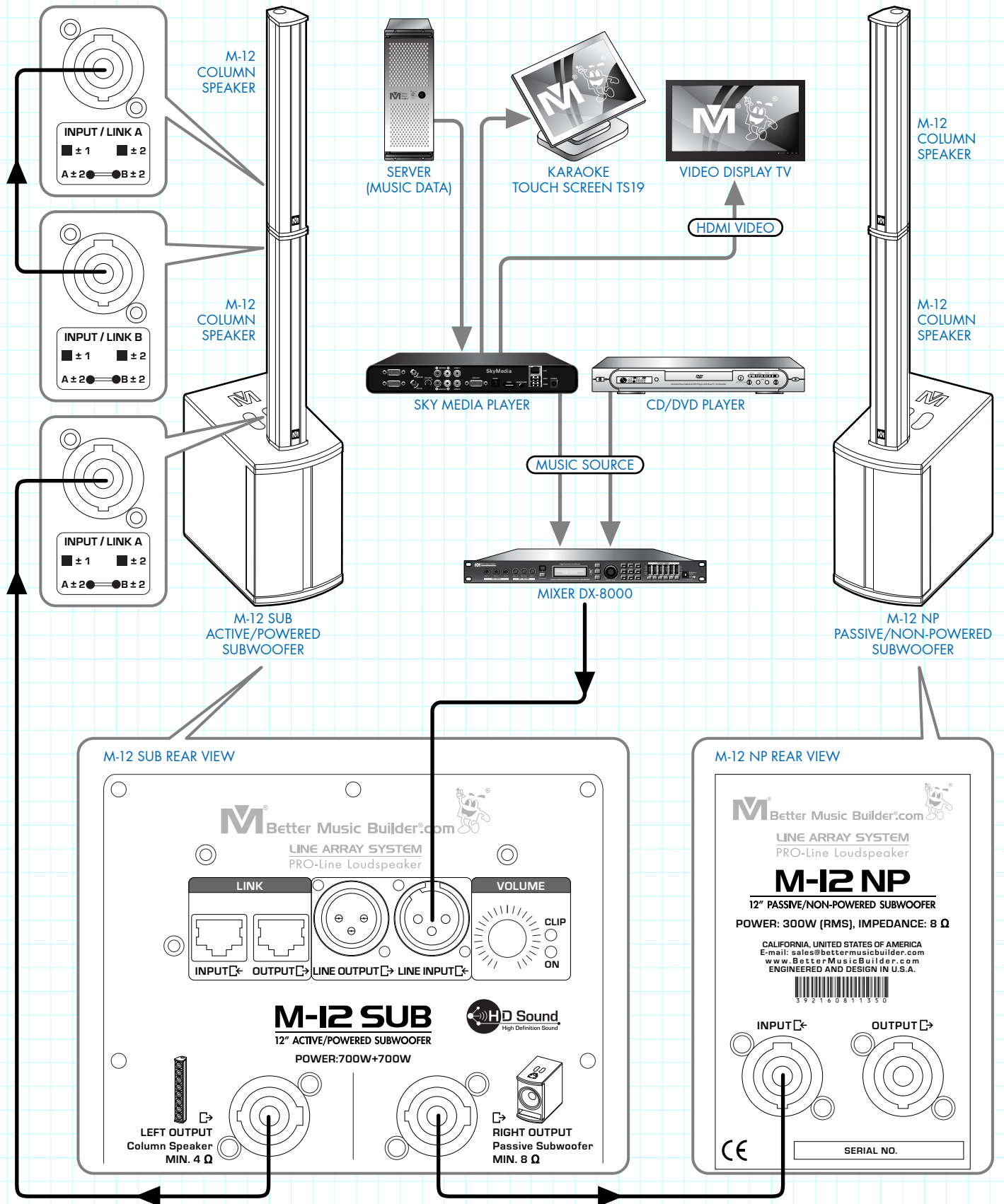
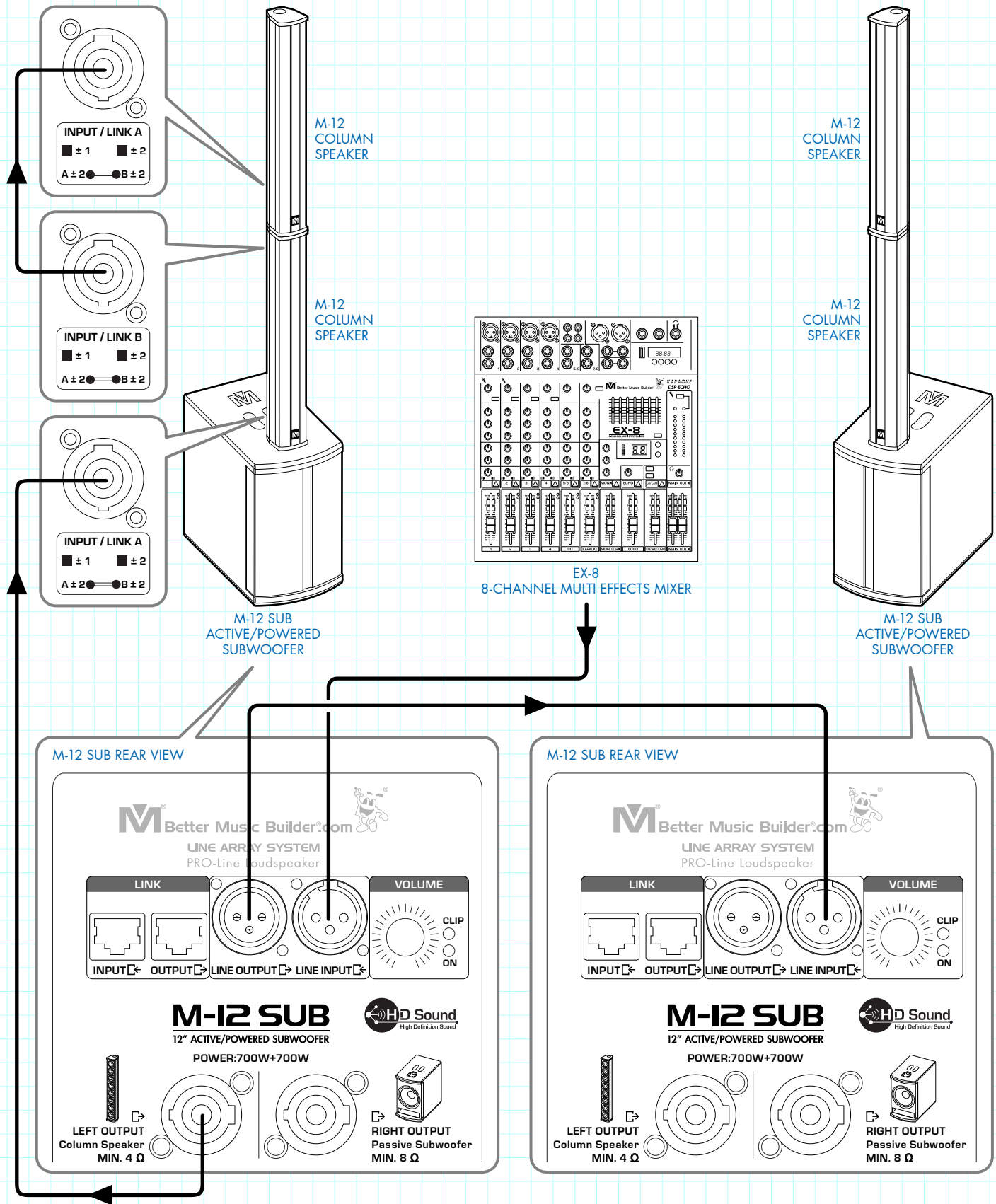


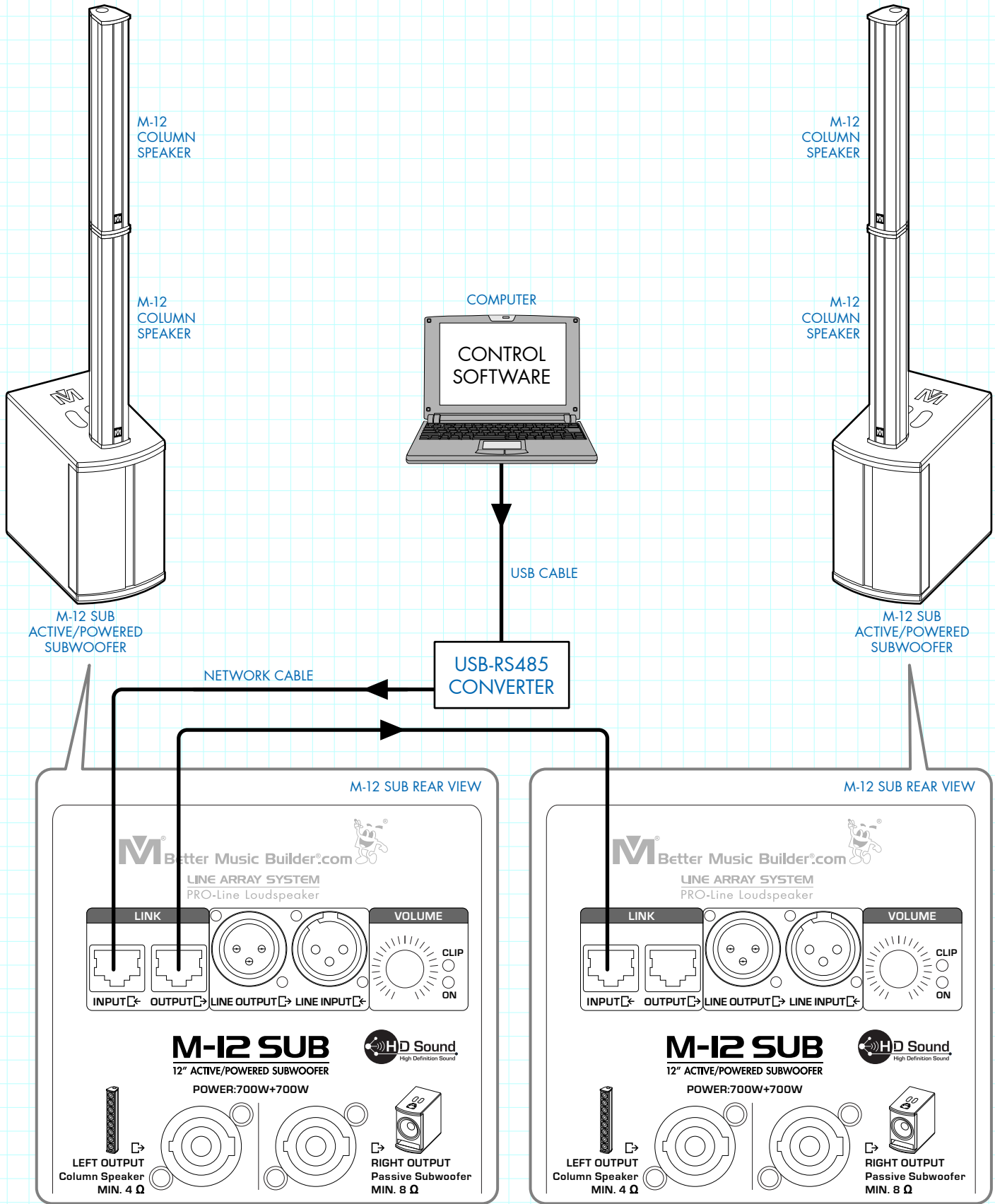
## CONNECTION METHOD 1



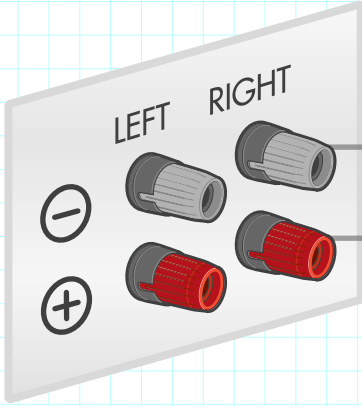
## CONNECTION METHOD 2



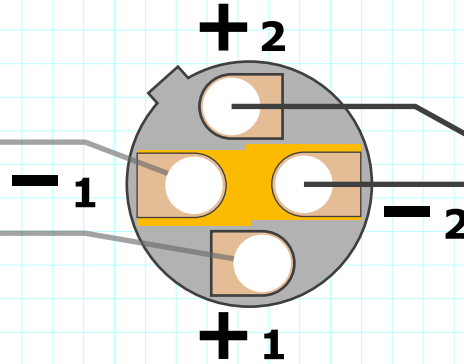
## CONNECTING CONTROL SOFTWARE TO M-12 SUB (ACTIVE/POWERED)



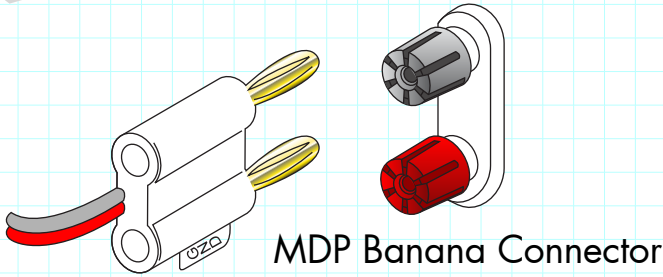
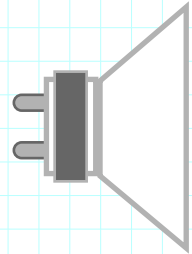
Amplifier Output



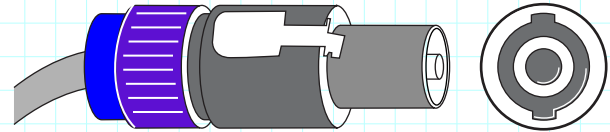
Speakon Connector



Speaker

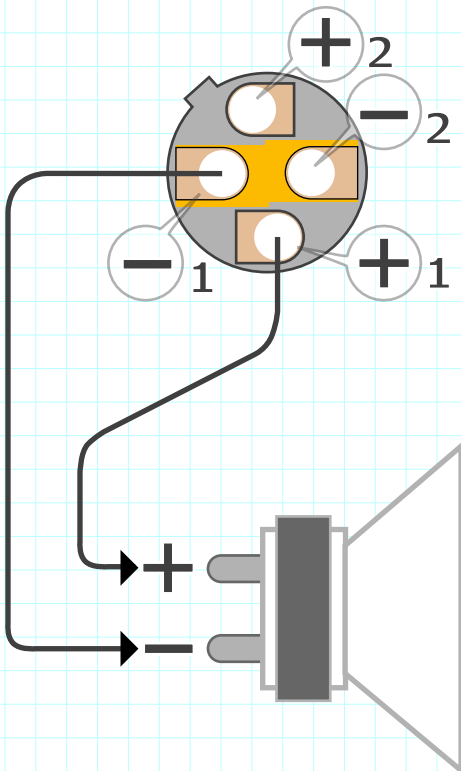


MDP Banana Connector



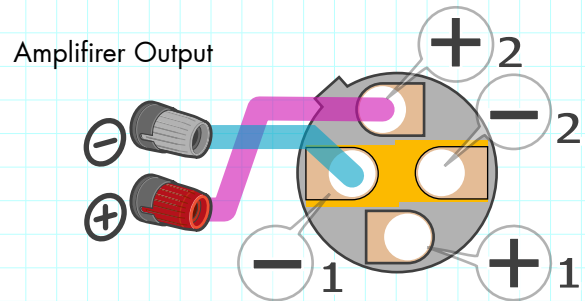
Neutrik Speakon Connector

Right Connection

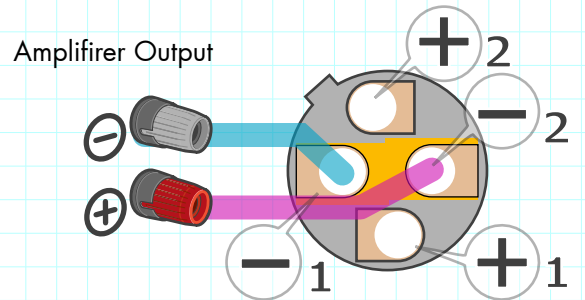


The positive and negative connect correctly to the speaker.

Wrong Connection



The positive and negative are not connected on the same set.



The positive misconnected to the negative which will not work.